

## **EMERGENCY SUPPORT FUNCTION # 9 SEARCH & RESCUE**

**PRIMARY AGENCIES:** Guernsey County Fire Service

---

**SUPPORT AGENCIES:** Guernsey County Sheriff's Office  
Municipal Law Enforcement Agencies  
Guernsey County EMS Agencies  
Guernsey County EMA  
Guernsey County Underwater Rescue  
Public Works & Transportation

---

**STATE & REGIONAL AGENCIES:** Ohio State Highway Patrol  
Ohio Department of Natural Resources  
State Region SAR Teams  
Ohio Task Force 1  
Region 8 Water Rescue Team

### **I. Introduction**

#### **A. Purpose**

The purpose of this ESF is to identify search and rescue roles and responsibilities and resources available to Guernsey County during a disaster.

#### **B. Scope**

ESF-9 outlines the general guidelines that may be implemented as necessary for a successful search and rescue, to include providing medical assistance to victims upon rescue. Planning for every search and rescue situation is beyond the scope of this ESF.

#### **C. Policies**

1. ESF-9 agencies will plan, coordinate, and conduct or implement search and rescue operations in accordance with established procedures based upon life safety and available resources.
2. US&R operations will be a team effort of law enforcement, fire services, volunteers, other agencies, and the private sector.
3. ESF-9 will coordinate with ESF-4 for the efficient medical treatment and transportation of victims to medical facilities.
4. Staging areas will be established and identified for requested mutual aid resources in support of Search and Rescue.
5. ESF-9 agencies will manage and coordinate all search and rescue operations under the National Interagency Incident Management System (NIIMS). All agencies supporting response efforts will coordinate activities through the unified command structure of the Incident Command System.
6. Search and recovery personnel will conduct the search for and recovery of bodies only after the rescue of survivors has been completed and the environment will allow for safe operation.

## **EMERGENCY SUPPORT FUNCTION # 9 SEARCH & RESCUE**

### **II. Situation & Assumptions**

#### **A. Situation**

1. The primary objective when searching for lost or missing persons is to find the lost person in the best possible condition, expeditiously, while expending resources wisely.
2. Agencies that conduct preplanning for SAR mission(s) must consider hazards such as fire, confined space rescue, high-rise structures, forested areas, recreational areas/facilities, waterways, chemical/nuclear/biological locations.
3. Responders may face added difficulties or hindrances after a disaster because of extensive damage to the local infrastructure. Such damage then may create environmental safety and health hazards such as downed power lines, unstable foundations or structures, exposure to biohazards, toxins, and blood-borne pathogens.
4. Responders must also take into consideration when their safety and the safety of the victims are being impacted by severe weather conditions such as temperature extremes, snow, rain, and high winds.
5. SAR incidents may be crime scenes and all precautions to protect evidence must be used. Immediate and hourly communications between searchers and law enforcement is necessary for an effective search.

#### **B. Assumptions**

1. Search and rescue operations in a disaster will require the use of existing trained search and rescue personnel and specialized equipment.
2. Natural and technological disasters will greatly increase the scope of search and rescue operations.
3. Guernsey County recognizes that it cannot provide all necessary equipment or personnel to cope with every search and rescue mission during a major emergency or disaster.
4. Local resources will generally be able to provide adequate coverage during normal searches. If local capabilities are exceeded, support will be available from several regional and state resources.
5. Support such as helicopters, tracking dogs, and outside search and rescue teams may be required from adjoining political subdivisions or from state resources to ensure maximum search and rescue effectiveness.
6. During a emergency incident, citizen volunteers often freely want to offer assistance with the rescue. Extreme caution must be exercised with untrained and often unorganized volunteers to prevent either their personal injury or contamination of the search area.
7. Guernsey County has a number of CERT trained volunteers.
8. The rapid identification of essential resources will improve SAR response capabilities.
9. The Incident Command System (ICS) will be used to coordinate the efforts of all agencies involved in a search.

## **EMERGENCY SUPPORT FUNCTION # 9 SEARCH & RESCUE**

### **III. Concept of Operation**

#### **A. General**

1. Each agency involved in a SAR mission will maintain authority with its jurisdiction and relay regular reports to the county EOC if activated. Search and Rescue operations will simply be an expansion of their normal responsibilities.
2. All mutual-aid/support requests, including Region 8 SAR activation will be submitted through established channels. When mutual-aid is activated, the Incident Commander will insure that resources at the scene are integrated into the established ICS.
3. Activity reports and documentation will be generated at the agency level and submitted to the Primary Agency for presentation in the EOC.
4. Expenditure reports and documentation will be generated at the agency level and will be submitted to Guernsey County EMA for inclusion in possible reimbursement requests.

#### **B. Organization & Direction and Control**

1. Guernsey County will use its existing emergency response organizations, to initiate SAR operations.
2. Search & Rescue Operations in Guernsey County will use the Incident Command System structure for SAR operations conducted in the County in accordance with the National Incident Management System (NIMS).
3. During a disaster SAR operations will be coordinated with ESF 4.

#### **C. Pre-Incident Actions**

1. Plan for the coordination and mobilization of resources of county fire and rescue, law enforcement, and EMS services to aid in SAR activities.
2. Provide SAR training to applicable response personnel.

#### **D. Incident Period Actions**

1. Local fire departments with heavy rescue equipment will typically mitigate incidents utilizing single jurisdictional or mutual aid personnel and equipment.
2. When conditions exceed local resources, State USAR Regional Strike Teams may be requested to bring additional technicians, capabilities and equipment to the incident.
  - a. State USAR Regional Strike Teams provide up to 12 hours of heavy rescue capabilities and deploy within 30 minutes of notification. They are designed to deliver 30 members for quick response.
  - b. Region 8 All-Hazard Activation/Dispatch protocols are outlined in attachment 1 to this ESF.
  - c. Additional State USAR Regional Strike Teams can be utilized through local police/fire/sheriff dispatch mechanisms or through the State Wide Emergency Response Plan component of IMAC. Upon activation, State USAR Regional Strike Teams shall notify the Ohio EMA Duty Officer of the response.
  - d. State USAR Regional Strike Team leaders will report to the Incident Commander and operate under the local jurisdiction's established incident command structure.

## **EMERGENCY SUPPORT FUNCTION # 9 SEARCH & RESCUE**

3. When conditions exceed the resources of a State USAR Regional Strike Team, OHTF-1 should be activated. The incident may be of such magnitude that both a State USAR Regional Strike Team and OHTF-1 are activated simultaneously.
  - a. OHTF-1 can be utilized through OHTF-1 dispatch, or the State Wide Emergency Response Plan component of IMAC. Upon activation, OHTF-1 shall notify the Ohio EMA Duty Officer of the response.
  - b. OHTF-1 Task Force Leaders will report to the Incident Commander and operate under the local jurisdiction's established incident command structure.
  - c. While some incidents may not require 72 hours of self-sufficient heavy rescue operations, the OHTF-1 team brings the ability to rotate, rehab and transport personnel, with the necessary logistical support of food, water, shelter and heavy equipment.
  - d. The activation of OHTF-1 will be coordinated through the Ohio EMA, based on the existing Memorandum of Agreement, (Interim Memorandum of Agreement April 1, 2000).

### **4. Water Rescue**

- a. The Guernsey County Underwater Rescue Team is activated by page out thru the Guernsey County Sheriff's Office dispatch center.
- b. Several local fire departments have boats for use during rescue missions. They are listed in the resource manual.
- c. The Guernsey County Sheriff's Office has an airboat available for swift water rescues.
- d. The Region 8 Water Strike Team is comprised of ten (10) counties located in Southeastern Ohio.



- e. The Region 8 Water Strike Team will utilize the same notification and dispatch policy that Region 8 USAR Strike Team utilizes.
- f. Available resources from the Ohio Department of Natural Resource are listed in the county resource manual.

### **E. Post Incident Actions**

1. Provide documentation for possible reimbursement of cost incurred for response.
2. Reimbursements for SAR activation costs can only be assured upon a declaration of a State or Federal Disaster.
3. Critique response efforts to update ESF 9 and provide ideas for training and resources needed.
4. Assist with recovery effort as requested.

## **EMERGENCY SUPPORT FUNCTION # 9**

### **SEARCH & RESCUE**

#### **IV. Roles and Responsibilities**

##### **A. Primary Agencies**

1. Maintain a roster of all support agency contact persons, make necessary notifications, activate support agencies as necessary, and maintain ongoing communications to support mission assignments.
2. Develop and maintain Standard Operating Procedures (SOPs) to allow for the efficient and effective mobilization of search and rescue resources countywide based on disaster scenarios.
3. Maintain documentation for operational accountability and for purposes of financial reimbursement once local resource capabilities have been exhausted.
4. Identify high-risk areas/buildings and develop a pre-plan for emergency operations at each of the identified sites.
5. Identify impacted areas/buildings post-impact and participate in the prioritization of search and rescue operations.
6. Coordinate with law enforcement resources to secure and restrict entry into unsafe and damaged areas.
7. Ensure that effective mutual aid communications between municipal, county, and private search and rescue resources.
8. Ensure that unified command procedures are implemented at incidents involving mutual aid search and rescue resources to enable a coordinated, efficient operation.
9. Assure that operational information is relayed to the EOC to ensure timely release of accurate public information.

##### **B. Responsibilities of Support Agencies**

1. Guernsey County Emergency Management Agency
  - a. Support SAR operations with resource coordination and activation of the Guernsey County Emergency Operations Center (EOC), if required by the scope of the event.
  - b. Maintain a listing of all available search and rescue resources within Guernsey County.
2. Guernsey County Sheriff's Office
  - a. Provide communications support as requested.
  - b. Provide mounted search & rescue when needed.
  - c. Provide site security and access restrictions to areas upon request.
  - d. Coordinate request for canine mutual aid assistance.
3. Municipal Law Enforcement Agencies  
Provide site security and access restrictions to areas upon request.
4. EMS Organizations
  - a. Provide medical treatment and transportation of victims to medical facilities.
  - b. Provide for rehab of search and rescue teams.

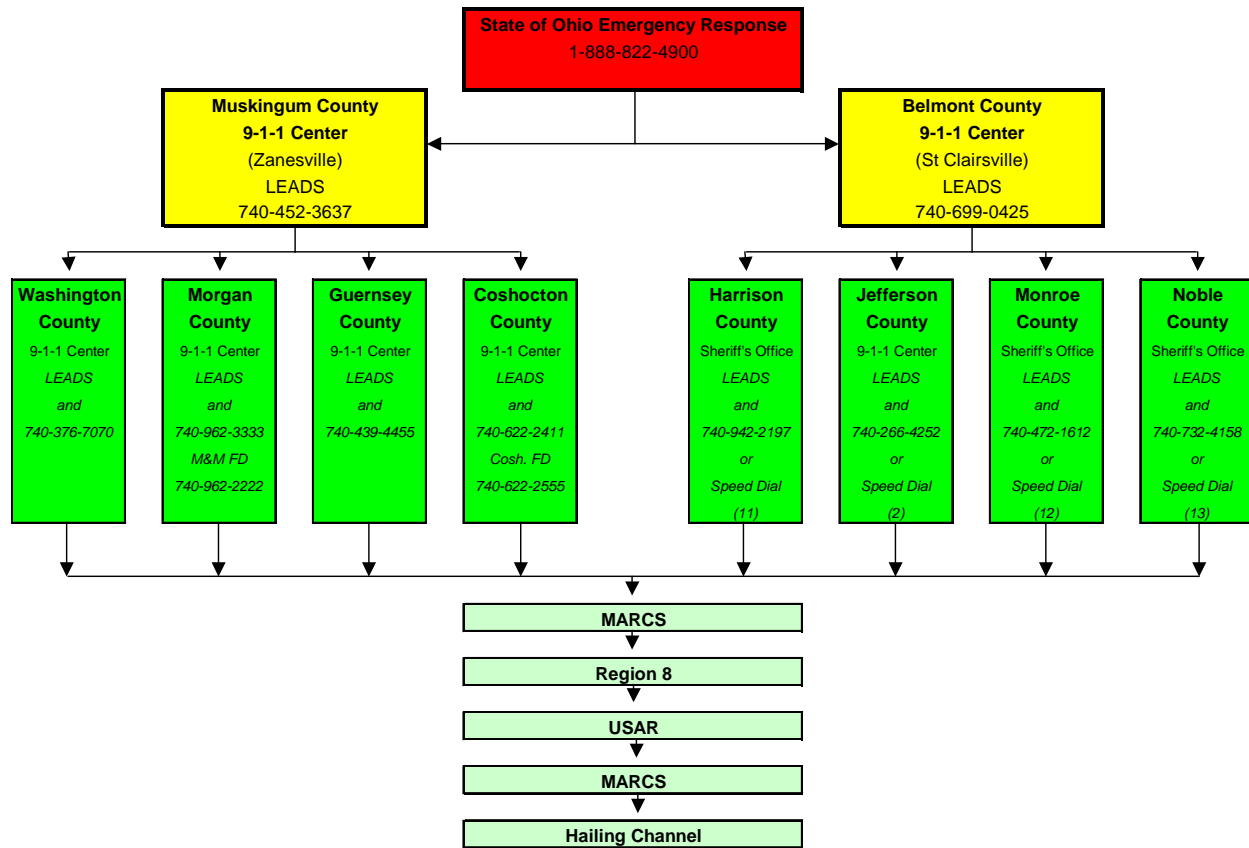
## **EMERGENCY SUPPORT FUNCTION # 9 SEARCH & RESCUE**

5. Guernsey County Underwater Rescue  
Provide personnel and equipment for water rescues and recovery missions.
6. Public Works & Transportation  
Provide heavy equipment to support rescue operations.
- C. Responsibilities & Capabilities of State Agencies
  1. Ohio State Highway Patrol
    - a. Provide aviation support if requested. OSHP has both fixed wing and rotary wing aircraft equipped with special features such as “night-sun” and “FLIR” – Forward Looking Infrared.
    - b. Within 2.5 – 3 hours after activation, a 9-person self-contained team can arrive on scene to assist with searches and rescues.
    - c. OSHP can obtain air space restrictions from the FAA.
    - d. OSHP can provide site security and access restrictions to areas upon request.
    - e. OSHP can assist in establishing communications webs and command centers.
  2. Ohio Task Force One
    - a. Available contingent of 62 SAR trained, FEMA recognized, personnel throughout the state.
    - b. For the first 72 hours after deployment, the team is totally self-sufficient, including but not limited to, food, fuel, repair/replacement equipment, and communications resources.
  3. Ohio Department of Natural Resources
    - a. Provide heavy equipment (i.e. bulldozers, back hoes, dump trucks) to assist with SAR.
    - b. Provide Law enforcement personnel.
    - c. Air assets, including fixed wing and rotary aircraft.
    - d. A mobile command and communication vehicle with self-contained trailer.
    - e. Water vessels to provide search and rescue operations upon any waters of the state.
    - f. Side-scan sonar, underwater video capabilities, night vision and thermal imaging equipment.
    - g. A wide range of vehicles to support operations, including 4x4 vehicles and all-terrain vehicles.
    - h. Canine units to assist in searches.

### **V. Supporting Plans & Procedures**

**EMERGENCY SUPPORT FUNCTION # 9**  
**SEARCH & RESCUE**  
**Attachment 1**

**Region 8 All Hazards Activation/Dispatch Protocol**



*Each County 911 Dispatch Center will follow their all call notification procedures for their specific county Region "8" Strike*

**Verification and Communications**

"ALL" 911 Dispatch Centers will monitor MARC's Radio 800MHZ Base Radios (ECOMM 8 Talk Group) to communicate verification of team members responding and pertinent exchange of information.

Belmont County 911 dispatch will be the primary dispatch and control point for Region "8"

"All" Team Members must arrive at their Rally point prepared to be deployed with all safety clothing, personal items, medications, individual response gear bag. Notification of family and employer verification.

THIS PAGE INTENTIONALLY LEFT BLANK