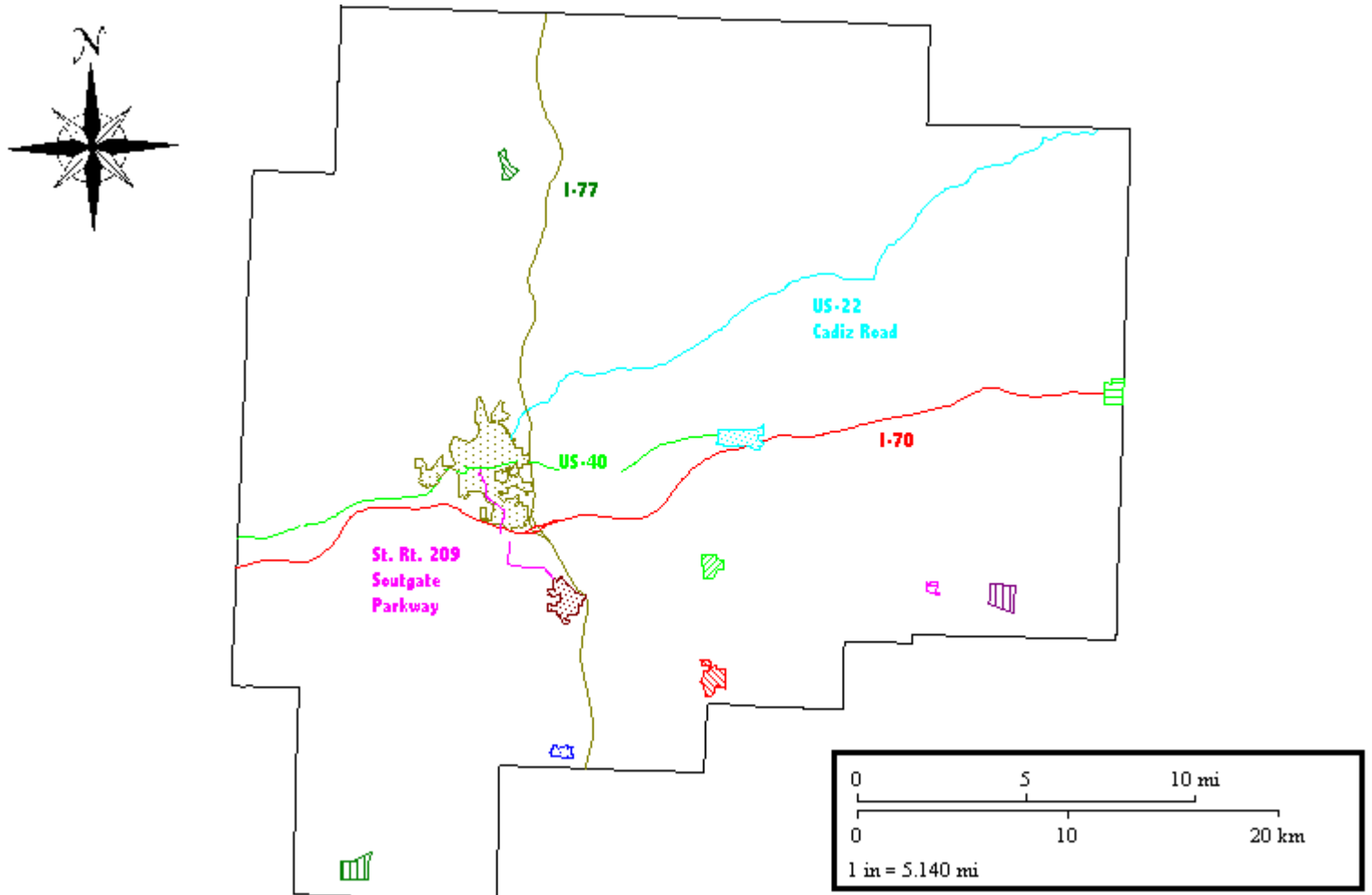


GUERNSEY COUNTY
HAZARDOUS MATERIALS
RESPONSE AND PREPAREDNESS PLAN

TAB 2-A

MAJOR TRANSPORTATION ROUTES



GUERNSEY COUNTY
HAZARDOUS MATERIALS
RESPONSE AND PREPAREDNESS PLAN

GUERNSEY COUNTY
HAZARDOUS MATERIALS
RESPONSE AND PREPAREDNESS PLAN

TAB 2-B
HAZARDOUS MATERIALS SHIPPED THROUGH
GUERNSEY COUNTY - HIGHWAY

NOTE: Excerpted from The University of Findlay ES&H Consulting Services Report #99078. Commodity Survey of Guernsey County conducted April 9, 2000 - April 24, 2000.

Hazardous Materials Shipped Through Guernsey County - Highway	
Alkaline Earth Metal Alcoholates, n.o.s.	Methanol
Ammonia, Anhydrous*	Methyl Methacrylate Monomer
Batteries, Wet, Filled with Acid	Mexacarbate
Carbamate Pesticide, Solid, Poisonous	Mescellaneous Class 9 Material
Carbofuran*	Nitrogen, Comprssed
Carbon Dioxide, Refrigerated Liquid	Nitrogen (Cryogenic)
Caustic Soda / Sodium Hydroxide	Nitrogen, Refrigerated Liquid (Cryogenic)
Chlorine*	Oxygen, Compressed
Cigarette Lighter, With Flammable Liquid	Oxygen, Refrigerated Liquid (Cryogenic)
Coal Gas	Paint, Paint Related Materials (Flammable)
Combustible Liquid	Pesticide, liquid, Flammable, Poisonous
Compound, Rust Removing (Corrosive)	Petroleum Crude Oil
Copper Arsenite	Phosphoric Acid
Dangerous When Wet	Potassium Nitrate & Sodium Nitrate Mixture
Decaborane*	Printing Ink
Diesel Fuel	Propane
Difluorophosphoric Acid	Radioactive Material
Dye, Liquid, Corrosive, n.o.s.	Rags, Oily
Elevated Temperature Liquid, Flammable, n.o.s.	Resin Solution
Environmentally Hazardous Substances, Liquid, n.o.s.	Sodium hydrosulfide
Esters, n.o.s.	Sodium Hydroxide Solution
Ethyl Ether	Sulfuric Acid*
Ethylamine, aq. Solution	Trichlorosilane*
Explosives	Toluene
Flammable Solid	Toluene diisocyanate*
Fluorosilic Acid	Unknown Corrosive
Harmful Substance	Unknown Dangerous Material
Hazardous Waste, Solid, n.o.s.	Unknown Flammable
Hydrofluorosilic Acid	Unknown Inhalation Hazard
Hydrogen, refrigerated liquid (cryogenic)	Unknown Nonflammable Gas
Hydrogen Selenide, Anhydrous*	Unknown Oxidizer
Insecticide Gas, Flammable, n.o.s.	Unknown Poison

*Extremely Hazardous Substances

OSHA Highly Hazardous Substances

Highlighted Substances

GUERNSEY COUNTY
HAZARDOUS MATERIALS
RESPONSE AND PREPAREDNESS PLAN

GUERNSEY COUNTY
HAZARDOUS MATERIALS
RESPONSE AND PREPAREDNESS PLAN

TAB 2-C

HAZARDOUS MATERIALS SHIPPED THROUGH
GUERNSEY COUNTY - RAILWAY

NOTE: Excerpted from The University of Findlay ES&H Consulting Services Report #99078. Commodity Survey of Guernsey County conducted April 9, 2000 - April 24, 2000.

CSX	
Alcohols n.o.s. (contains ethanol, methanol)	Environmentally Hazardous substances Liquid, n.o.s. (contains alcohol C13-C15 poly (1-3) Ethoxylate, alcohol C13-C15 poly (1-3) Ethoxlate)
Ammonium Nitrate	Environmentally Hazardous Substances Liquid, n.o.s. (contains alcohol C12-C15 poly (1-3) Ethoxylate, alcohol C13-C15 poly (1-6) Ethoxlate)
Combustible Liquid n.o.s. (contains ethanol)	Sodium Hydroxide
Environmentally Hazardous Substances Liquid, n.o.s. (contains alcohol C 12-C16 poly (1-6) Ethoxylate)	

*Extremely Hazardous Substances

OSHA Highly Hazardous Substances

Highlighted Substances

GUERNSEY COUNTY
HAZARDOUS MATERIALS
RESPONSE AND PREPAREDNESS PLAN

GUERNSEY COUNTY
HAZARDOUS MATERIALS
RESPONSE AND PREPAREDNESS PLAN

TAB 2-D

RAILROADS

